

WALTZ No. 2

from Suite for Variety Stage Orchestra

Percussion 2

Timpani, Cr. Cym., Bass Drum

Dmitri Shostakovich

Arr. by Paul Lavender

Allegro poco moderato ♩ = 130

Timpani

6 15 8 10

41

49 8 8 12

79 Cr. Cym. 7 7 rit. I a tempo 8

103 7 poco rit. a tempo 8 8 Cr. Cym. 6

B.D. f

Dynamic markings: *p*, *dim.*, *pp*, *mf*, *f*

Section markers: A, B, C, D, E, F, G, H, I, J, K, L, M

Tempo markings: *rit.*, *a tempo*

© 1956 G. Schirmer, Inc. (ASCAP)

This arrangement © 2010 G. Schirmer, Inc. (ASCAP)
International Copyright Secured. Rights Reserved.

Warning: Unauthorized reproduction of this publication is prohibited by Federal Law and subject to criminal prosecution.

Waltz No. 2 – Percussion 2

3

134 N 8 *rit.* Timpani *molto rit.* O

148 P

156 Q

164 R 4 S 10 *mf*

183 T *molto rit.* *a tempo*

191

200 U 4 V 2 *f*

212

WALTZ No. 2

from Suite for Variety Stage Orchestra

Percussion 1

Snare Drum, Triangle

Dmitri Shostakovich

Arr. by Paul Lavender

Allegro poco moderato ♩ = 130

S.D.

A

4

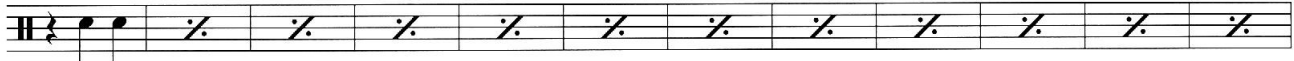


9

8

12

16

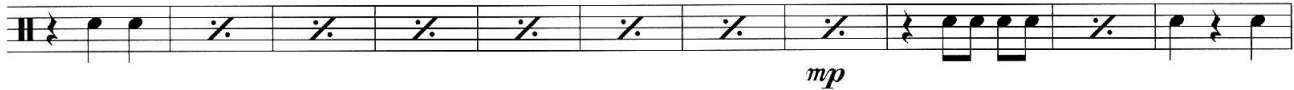


21 **B**

4

C

8



32

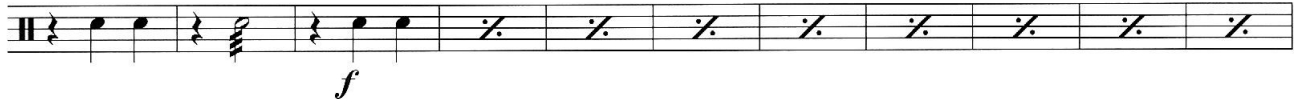


41

D

4

8



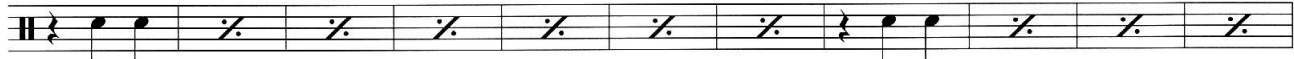
52

12

16

E

4



63

8

F



73

G



82

8

H

4



© 1956 G. Schirmer, Inc. (ASCAP)

This arrangement © 2010 G. Schirmer, Inc. (ASCAP)

International Copyright Secured. Rights Reserved.

Warning: Unauthorized reproduction of this publication is prohibited by Federal Law and subject to criminal prosecution.

Waltz No. 2 – Percussion 1

3

93 *rit.* **I** *a tempo*

103 **J** *poco rit.* **K** *a tempo*

113 **L**

124 **M**

134 **N** *rit.* *molto rit.*

144 **O** **P** **Q** **R**

S Triangle

172 *mf*

182 *molto rit.* **T** *a tempo*

192 **U**

202 **V**

212 *ff*